

2 Button manual integrated operation mode

1. Running

Press Δ , column running up

Press ∇ , column running down

2. Reset

When the red light flashes or other errors occur, keep pressing the down button until the motor stops, then release the down button and press it for 5 seconds. The column bounces a certain distance, indicating that the reset is successful.

3. Upper and lower limit

When it is necessary to limit the maximum and minimum running of the column, press and hold the up and down keys at the same time for 5 seconds. At this time, the maximum or minimum can be limited.

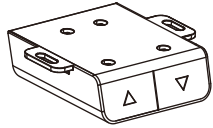
When the column is in the upper half of the stroke, the limit is the highest limit, and when the column is in the lower half of the stroke, the limit is the lowest limit.

4. Cancel the upper and lower limit

When it is necessary to cancel the upper and lower limit, run to the highest or lowest position of the column, press and hold the up and down keys for 5 seconds, then release the key to cancel the current limit.

5. Overheating protection

When the running time exceeds 2 minutes, the red light will flash 9 times, and the movement is overheated. In order to avoid damage to the movement, the lifting operation will be prohibited within 18 minutes.



Warning: Keep children away from height-adjustable desks, controlbox and hand control, there is a risk of injury and electric shock.

Common abnormal Handling

The following tips will help you detect and eliminate common exceptions and errors. If you encounter an exception that is not listed in the following table. Please contact your supplier. All these anomalies or errors can only be investigated and corrected by the manufacturer or specially trained person.

abnormal phenomena	Solutions
No reactions after turning on electricity and pressing the down key for a long time	1.check whether connection wire is normal 2.contact your supplier or dealer
No reactions after turning on power supply and pressing the up/down key for a long time	1.check whether connection wire is normal 2.contact your supplier or dealer
Slow rising speed	1.check whether the equipment load is too heavy and exceeds 70kg 2.contact your supplier or dealer
Motor actions don't conform to users' directions	1.contact your supplier or dealer
Only go down but not rise	1.reset 2.contact your supplier or dealer
Equipment downward sliding	1.check whether the equipment load is too heavy and exceeds 70kg 2.contact your supplier or dealer
The device often enters into the reset state	1.check whether the equipment load is too heavy and exceeds 70kg 2.contact your supplier or dealer
After working overloading requests (Duty cycle: Max 2min on/18min OFF)	1. The equipment will be suspended for 18 minutes before use. 2. contact your supplier or dealer
The height of rising and falling is not enough	1.Reset operation 2.contact your supplier or dealer

Waste Disposal

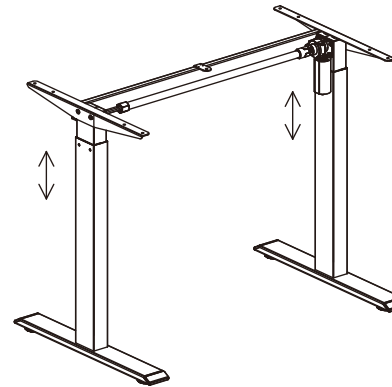
This sign indicates that the product should not be treated together with other domestic waste. In order to prevent potential harm to the environment and human beings caused by random treatment, it should be recycled to promote the sustainable reuse of material resources. When returning the equipment you use, please use the recycling and collection system or contact the dealer who purchased it. They are able to recycle while ensuring environmental safety.



Attention

- Power supply: AC100V-240V, frequency: 50 / 60Hz;
- Use environment: 0-40 degrees
- Before cleaning, the power plug must be pulled off. When cleaning, use a slightly damp cloth to wipe the dust on the surface. Pay attention not to let water drop into the parts, not to damage the connecting line, and not to loosen the plug connection
- The electrical box contains electronic components, metal, plastic, wire, etc., which should be disposed according to the environmental regulations of various countries, not according to the conventional household garbage disposal.
- Before using the product, please check carefully to make sure that the product has been installed correctly
- Before using the product for the first time, please be familiar with all the functions and program settings of the product
- Children are not allowed to play on the product. Some behaviors of children playing on the product are unpredictable, and the manufacturer is not responsible for the dangerous consequences.
- The slight noise of the multi wedge belt or braking system caused by the structure will not have any influence on the use of the equipment.
- It is forbidden to use corrosive or abrasive materials to clean the equipment. It must be ensured that the detergent used will not pollute the environment.
- Operate under the condition of knowing the relevant risks. Children aged 8 or above and people with physical and sensory defects and mental defects should use it under the correct supervision and guidance. Children are not allowed to touch and play at will
- It is not allowed to carry out cleaning and user maintenance without supervision.
- If the power cord is damaged, it must be replaced by the manufacturer or relevant professionals to avoid injury.
- Please make sure that your operating environment is free from any hazards, such as not littering your tools at will. And always handle the packing materials carefully to avoid all kinds of possible dangers, such as suffocation caused by children playing with plastic bags
- If necessary, please keep the original package for your future transportation.

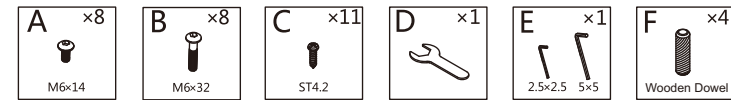
INSTALLATION INSTRUCTIONS OF HEIGHT ADJUSTABLE DESK



Technical Specification

Segments of leg	Two segments
Max Load Capacity	70KG
Max Speed	25mm/s
Input Voltage	100~240V
Min. Height	750mm
Max. Height	1200mm
Size of tabletop	1200mm*600mm
Duty cycle	10% (Max. 2 minutes on, 18 minutes off)
Use Temperature	0~40°C

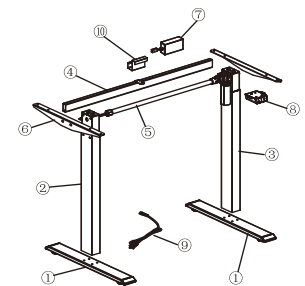
Screws pack



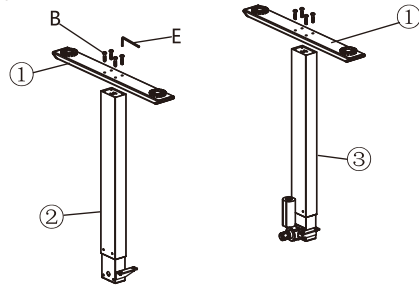
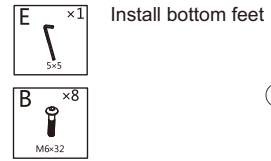
Component list

serial number	accessories	quantity	serial number	accessories	quantity	serial number	accessories	quantity
①	Bottom Feet	2	②	Left Leg	1	③	Right Leg	1
④	Center Rail	1	⑤	Rotating Bar	1	⑥	Side Bracket	2
⑦	Power Supply	1	⑧	Control Box	1	⑨	Power Cord	1
⑩	Power Pallet	1						

Installation Diagram

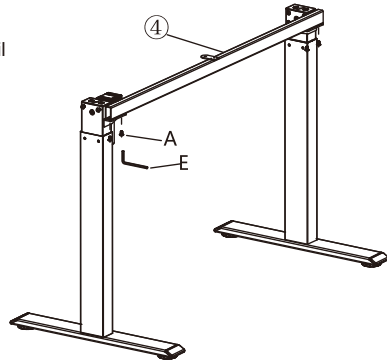
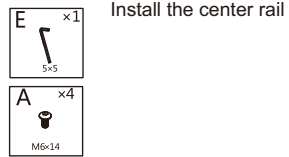


Installation Step 1



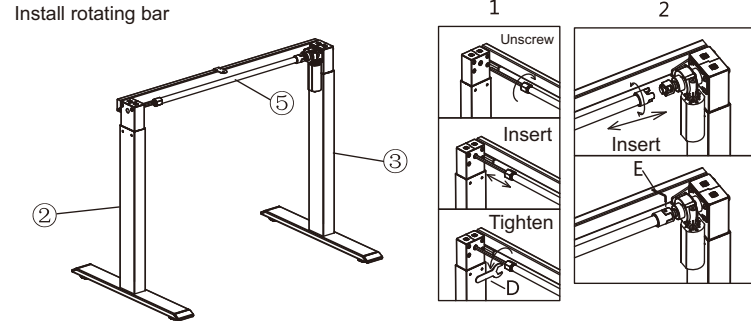
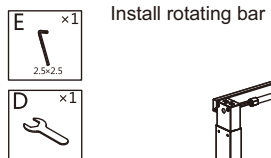
Connect bottom feet(1) with left and right leg(2,3) with screw B and make it tightened by Spanner F (5*5).

Installation Step 2



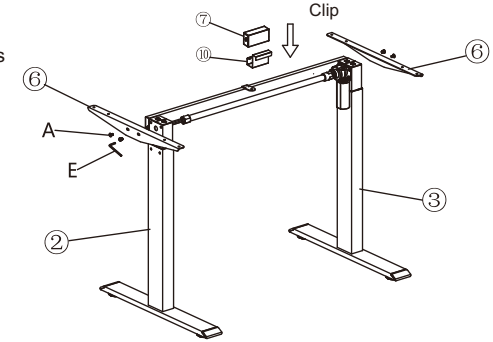
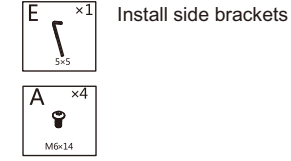
Fix the center rail(4) on legs(2,3) with screw A and make it tightened by spanner E(5*5),

Installation Step 3



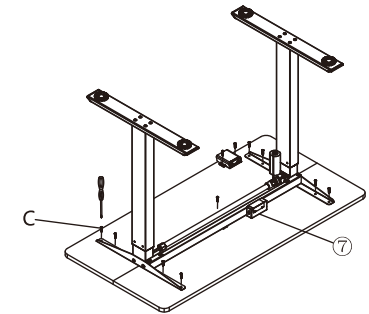
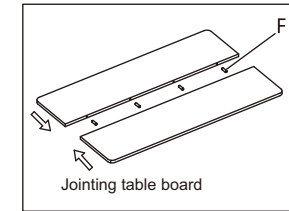
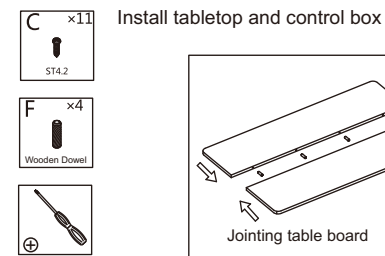
Connect rotating bar(5) with left and right leg(2,3) as the picture showed, make it tightened with spanner E(2.5*2.5) and nut spanner D

Installation Step 4



Connect side brackets(6) with left and right leg(2,3) by screw A and make it tightened by spanner E (5*5). Clip power pallet(10) on the center rail(4) and then clip power supply(7) on the pallet(10).

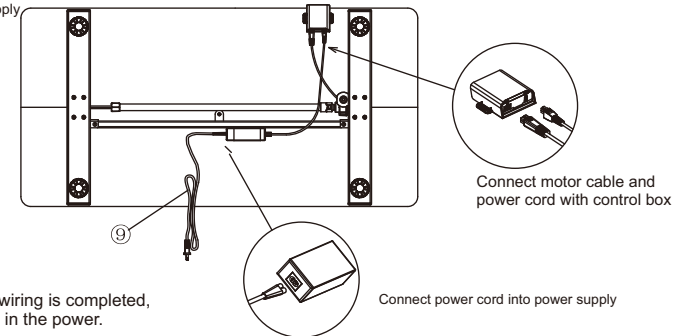
Installation Step 5



Jointing table board together with wooden dowel (F), then fix and tighten frame and control box(8) with table board by screw ST4.2(C).

Installation Step 6

Connect the cables and the Power Cord into power supply



Connect motor cable and power cord with control box

Connect power cord into power supply